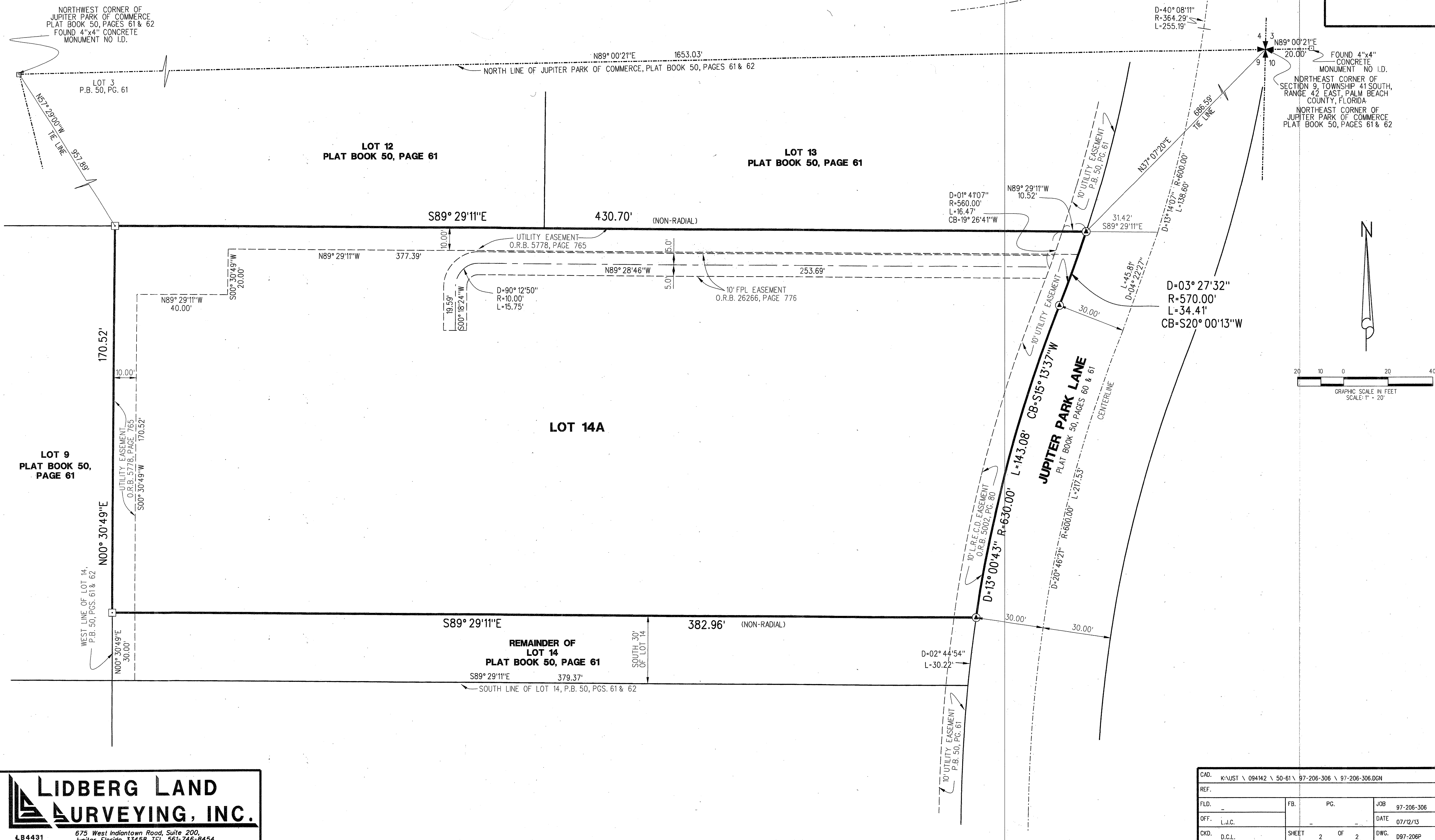


JUPITER PARK OF COMMERCE-REPLAT OF LOT 14

BEING A REPLAT OF A PORTION OF LOT 14, JUPITER PARK OF COMMERCE, RECORDED IN PLAT BOOK 50, PAGES 61 AND 62, PUBLIC RECORDS OF PALM BEACH COUNTY, FLORIDA, SECTION 9, TOWNSHIP 41 SOUTH, RANGE 42 EAST, TOWN OF JUPITER, PALM BEACH COUNTY, FLORIDA

SEPTEMBER 2013 SHEET 2 OF 2



LIDBERG LAND SURVEYING, INC.
 675 West Indiantown Road, Suite 200,
 Jupiter, Florida 33458 TEL. 561-746-8454
 LB4431

CAD. K:\JUST \ 094142 \ 50-61 \ 97-206-306 \ 97-206-306.DGN			
REF.			
FLD.	FB.	PC.	JOB 97-206-306
OFF. L.J.C.			DATE 07/12/13
CKD. D.C.L.	SHEET	2 OF 2	DWG. D97-206P